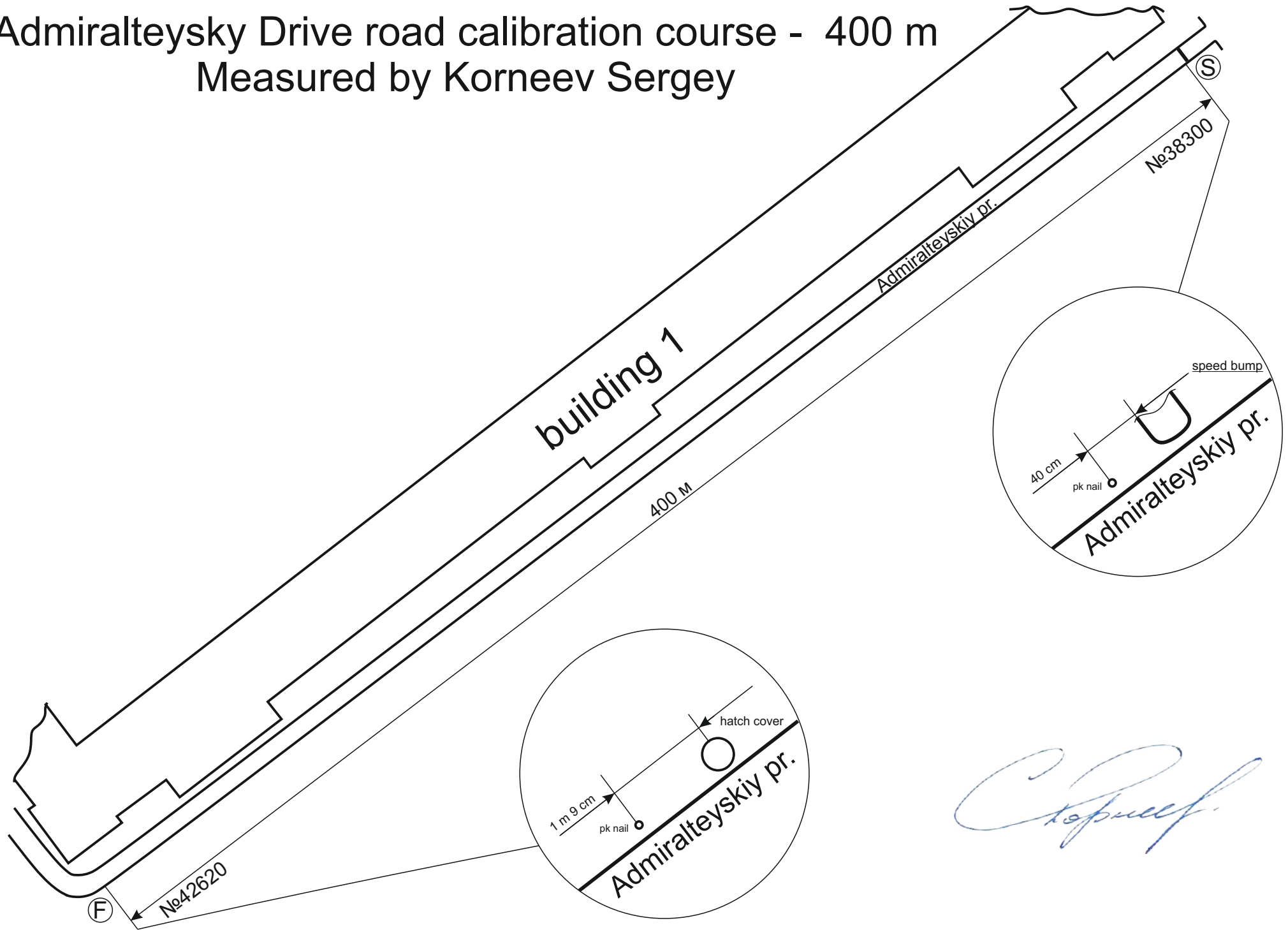


Admiralteysky Drive road calibration course - 400 m

Measured by Korneev Sergey

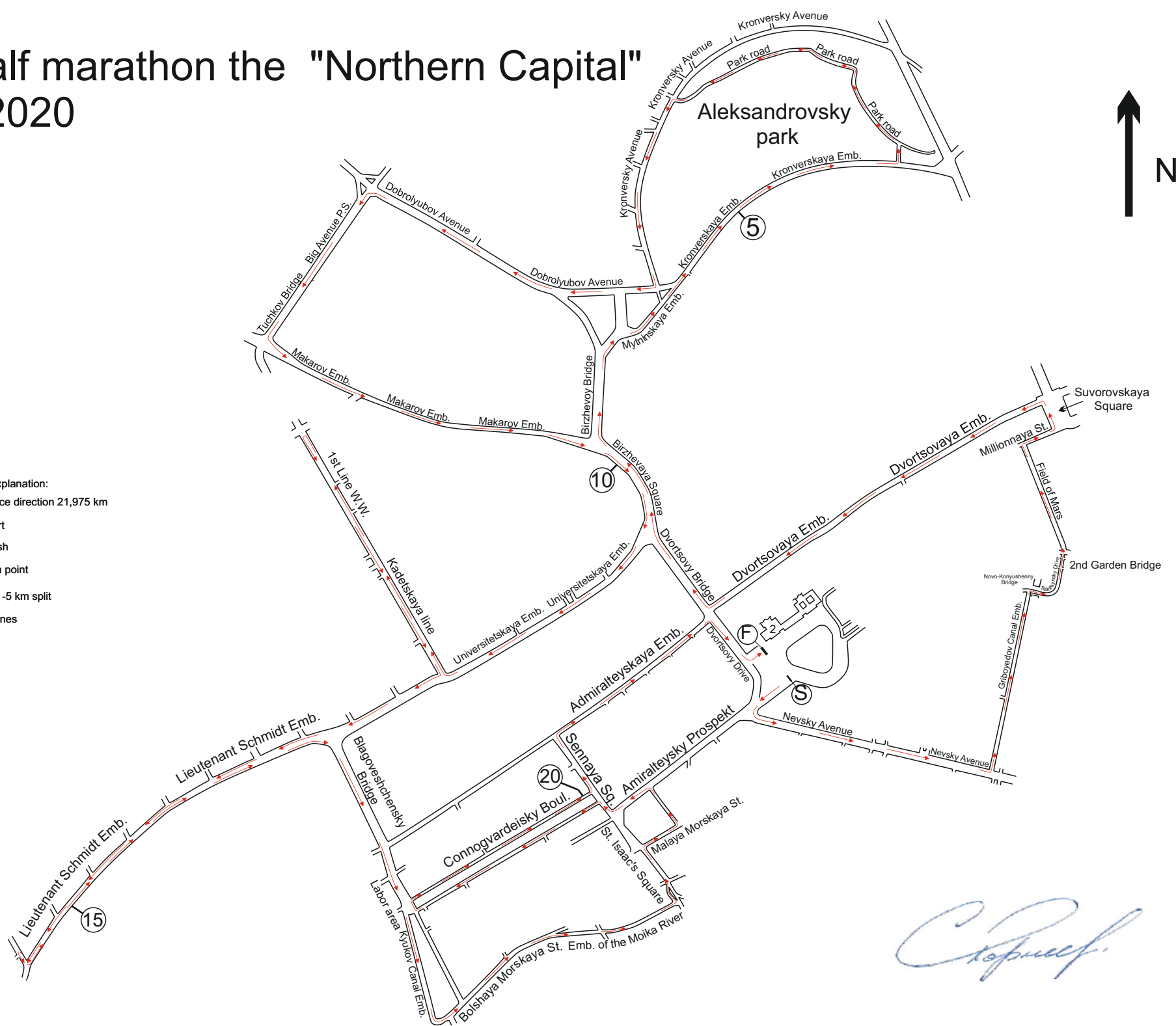


S. Korneev

SPB half marathon the "Northern Capital" 09.08.2020



- Explanation:
- Race direction 21,975 km
 - Ⓢ -start
 - ⓕ -finish
 - ⓉP -turn point
 - Ⓢ-20 -5 km split
 - ... -cones

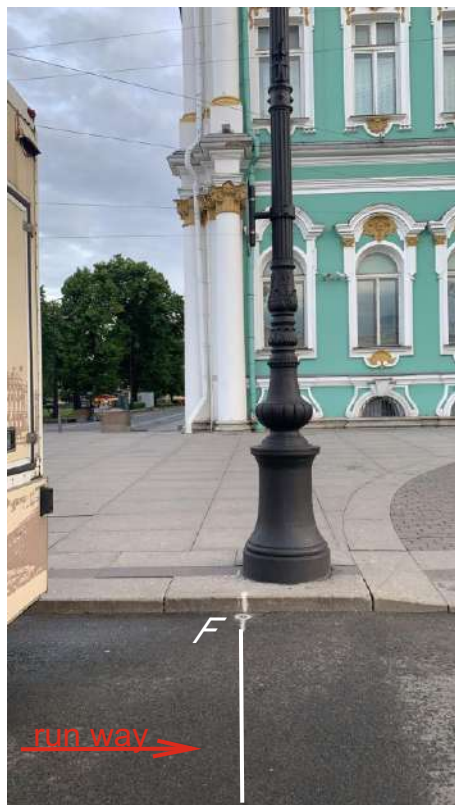
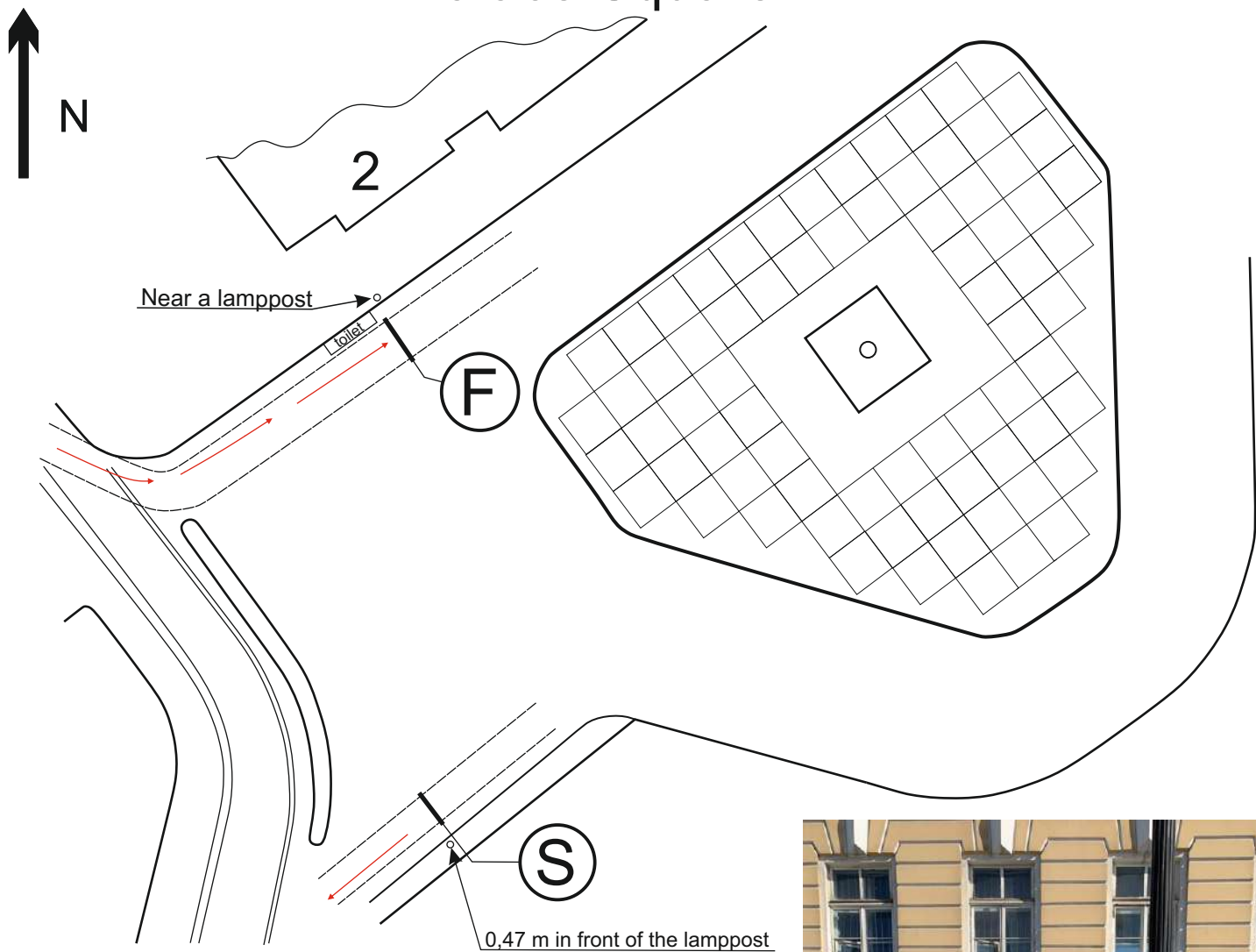


SPB half marathon the "Northern Capital"

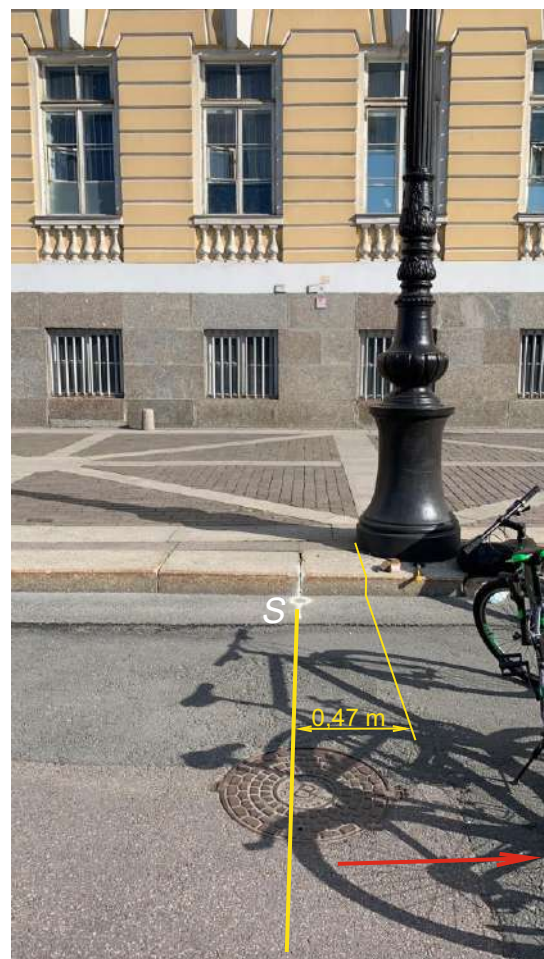
09.08.2020

Ⓢ/ⓕ-Start/Finish

Palace Square



С. Попов

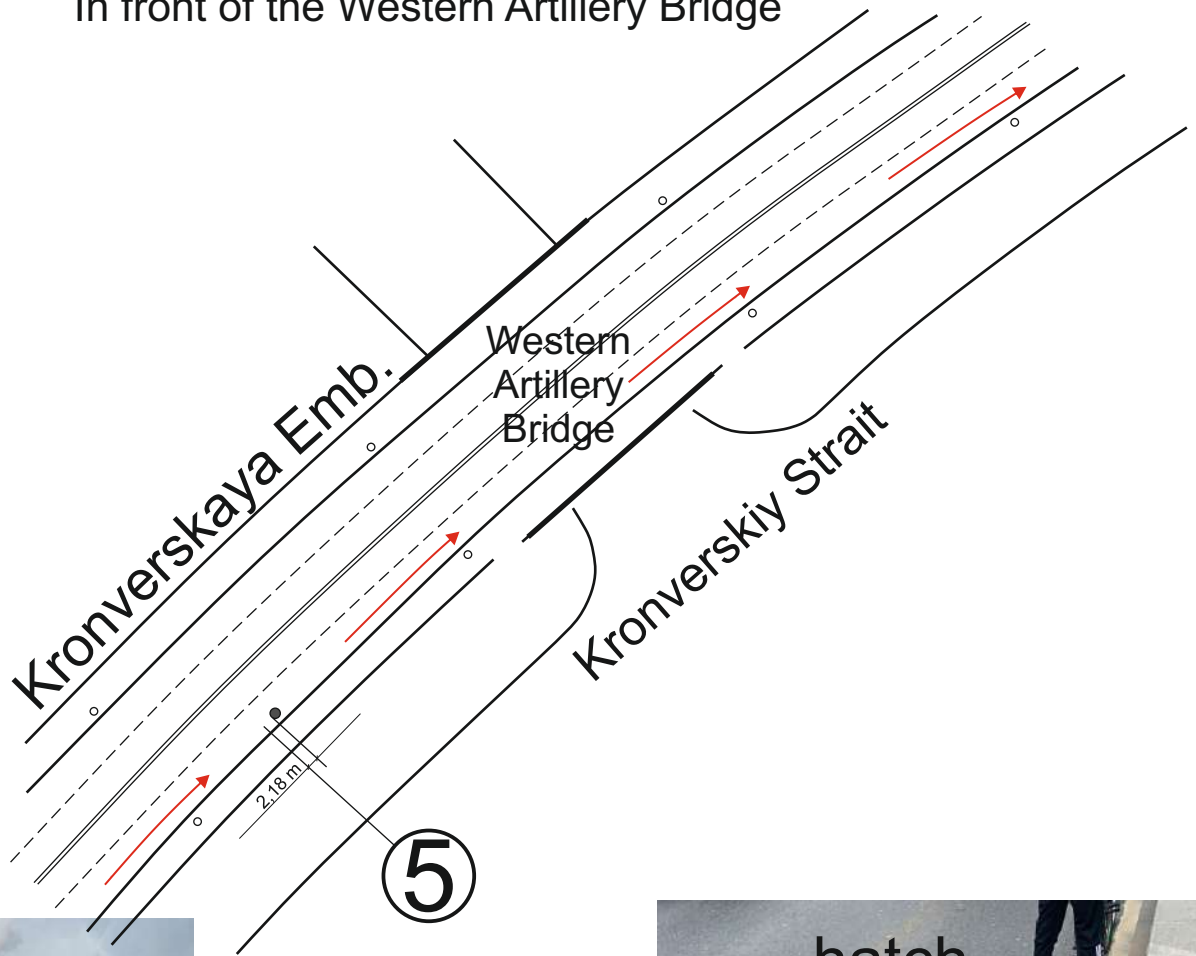


SPB half marathon the "Northern Capital"

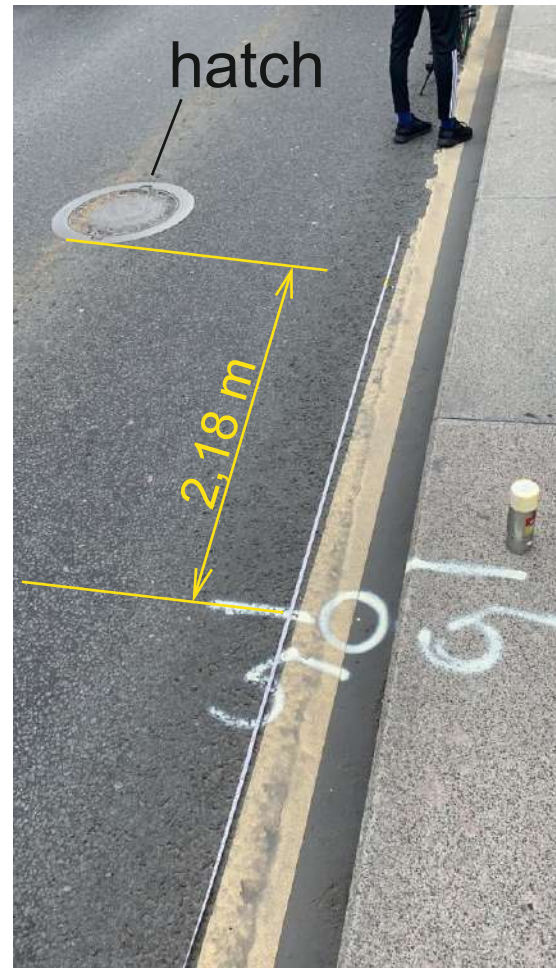
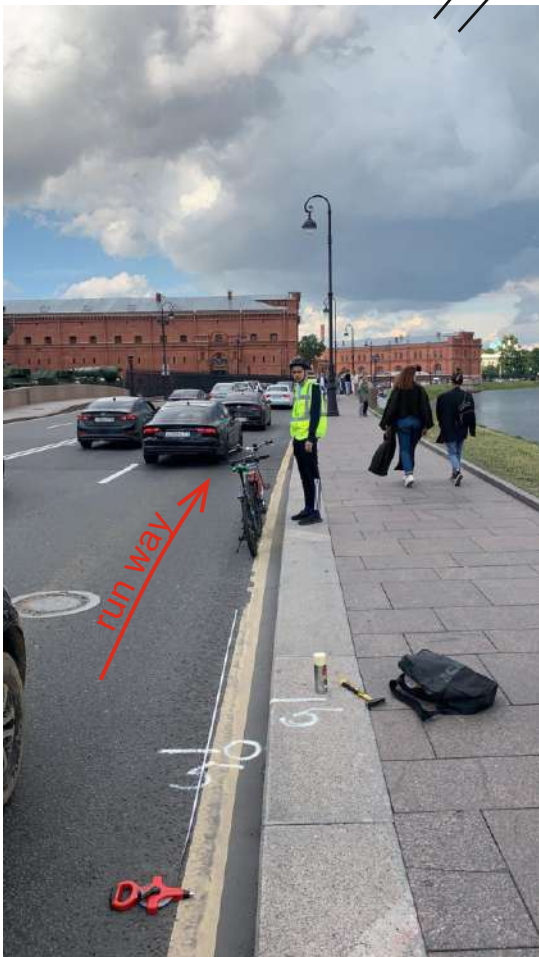
09.08.2020

⑤ - 5 km split

Kronversky Avenue 2,18 m in front of the hatch.
In front of the Western Artillery Bridge



Чепуров

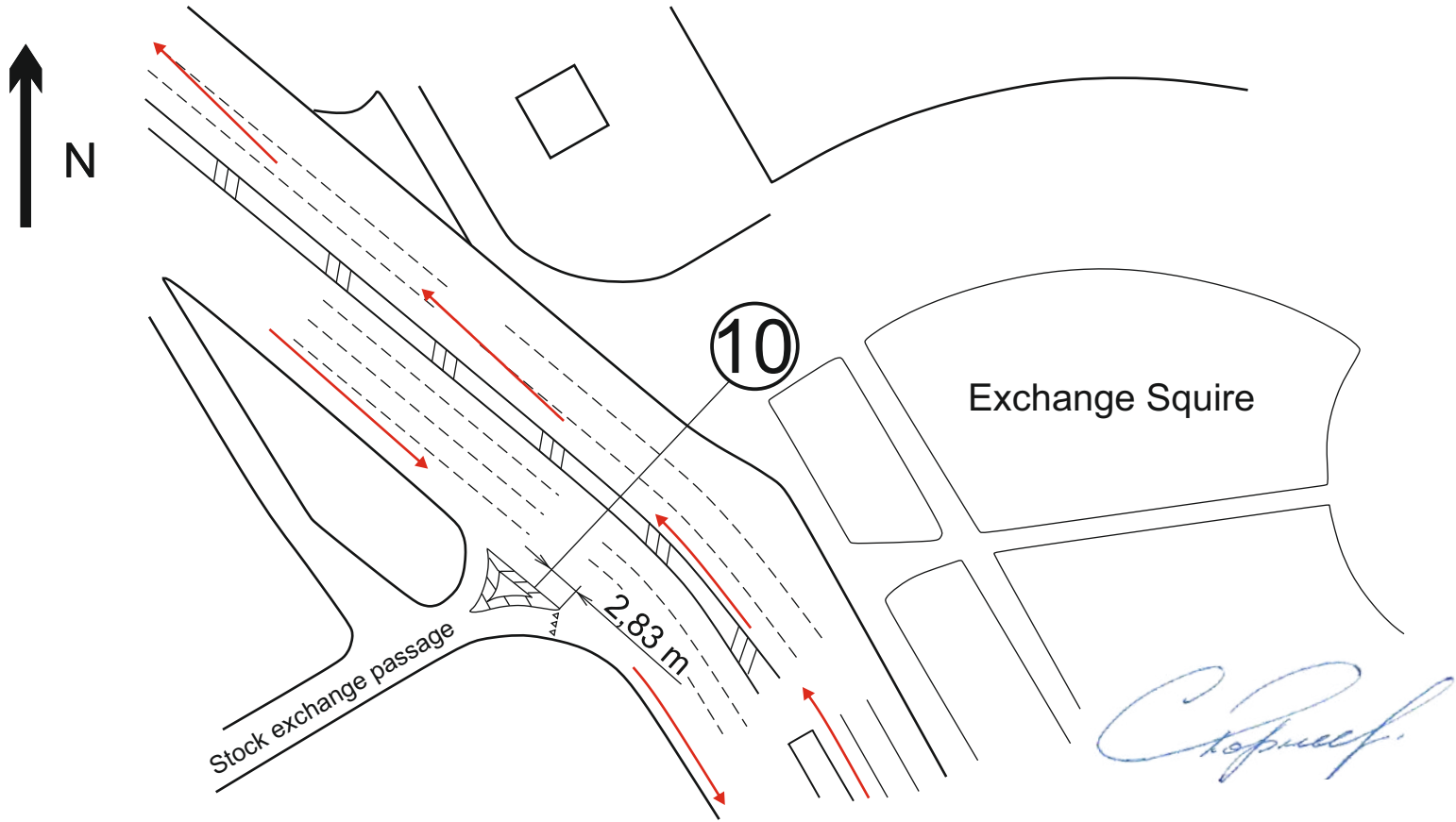


SPB half marathon the "Northern Capital"

09.08.2020

⑩ - 10 km split

Exchange area. 2,83 m before marking angle

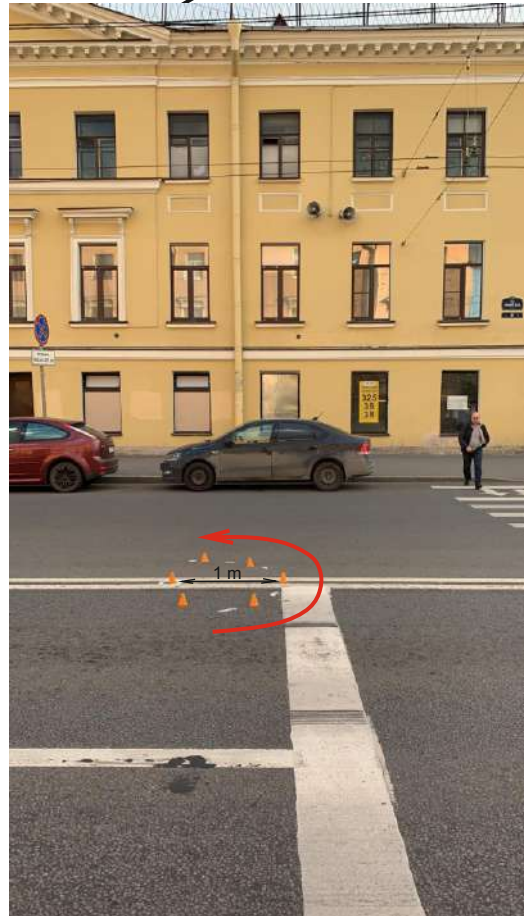
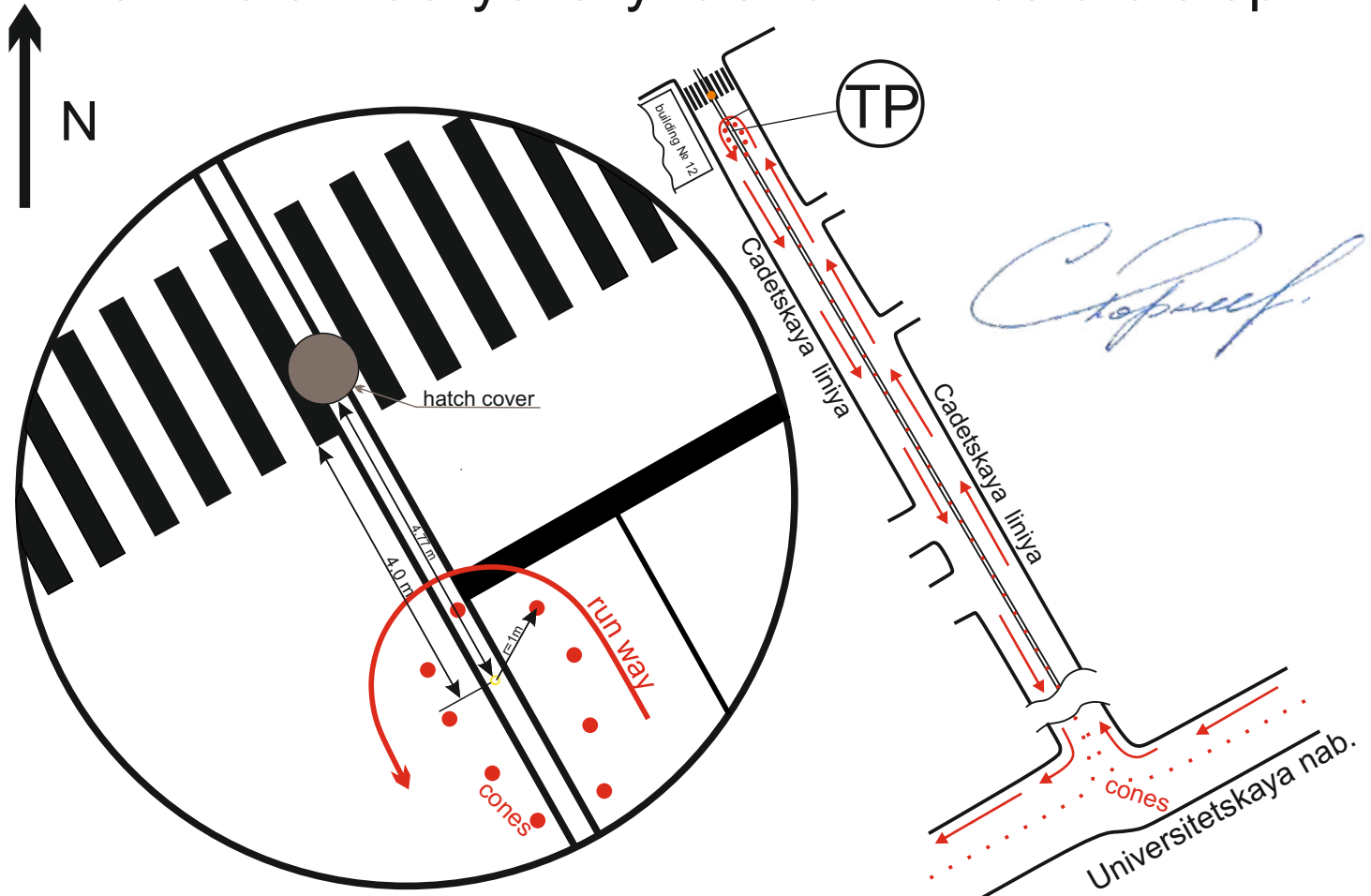


SPB half marathon the "Northern Capital"

09.08.2020

TP - Turn Point

1st line of Vasilyevsky Island. 1 m before stop line

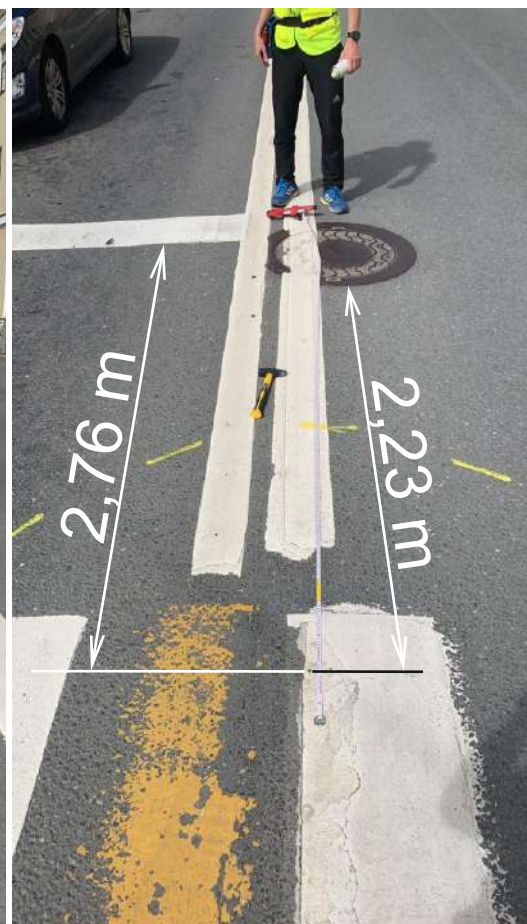
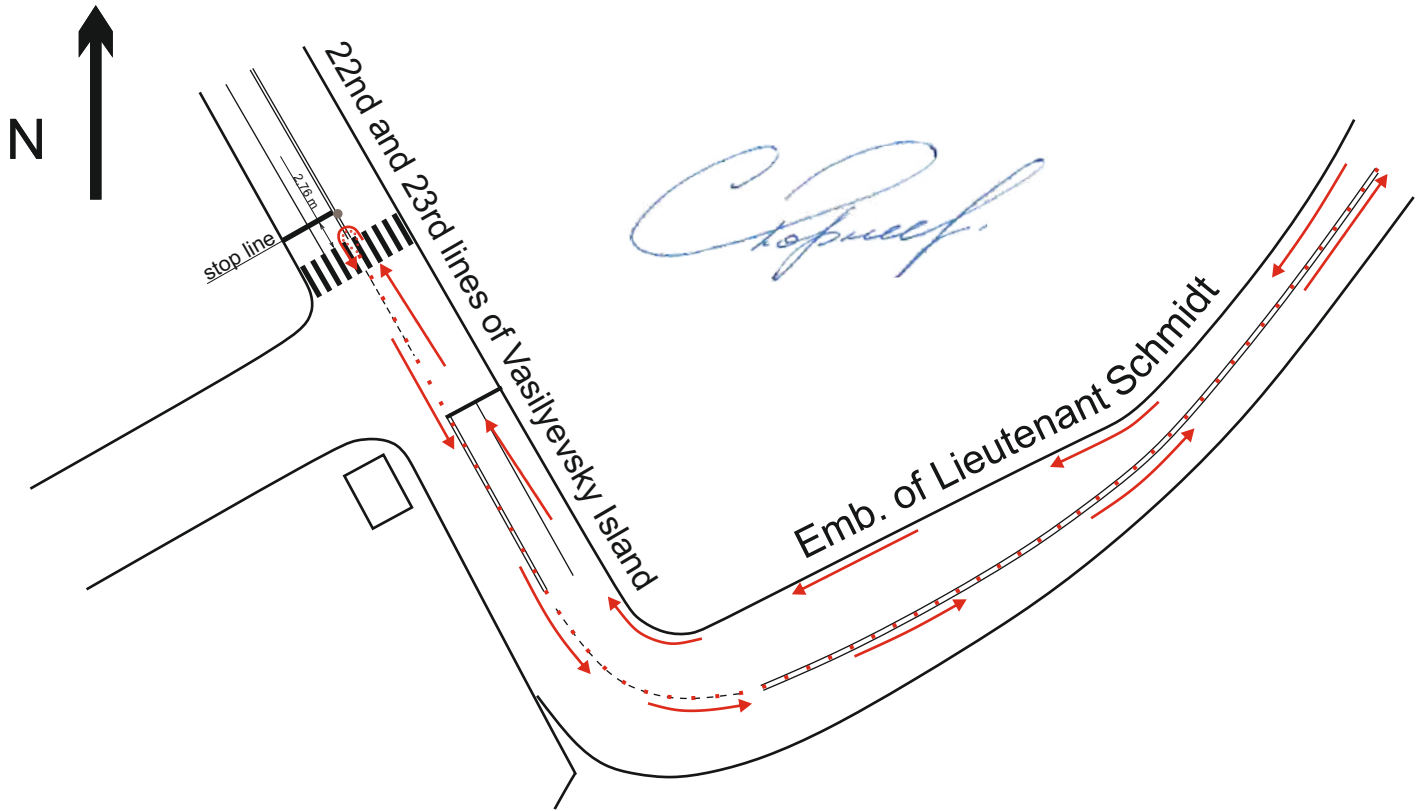


SPB half marathon the "Northern Capital"

09.08.2020

TP -2 Turn Point

22nd and 23rd lines of Vasilyevsky Island. 2,76 m before stop line

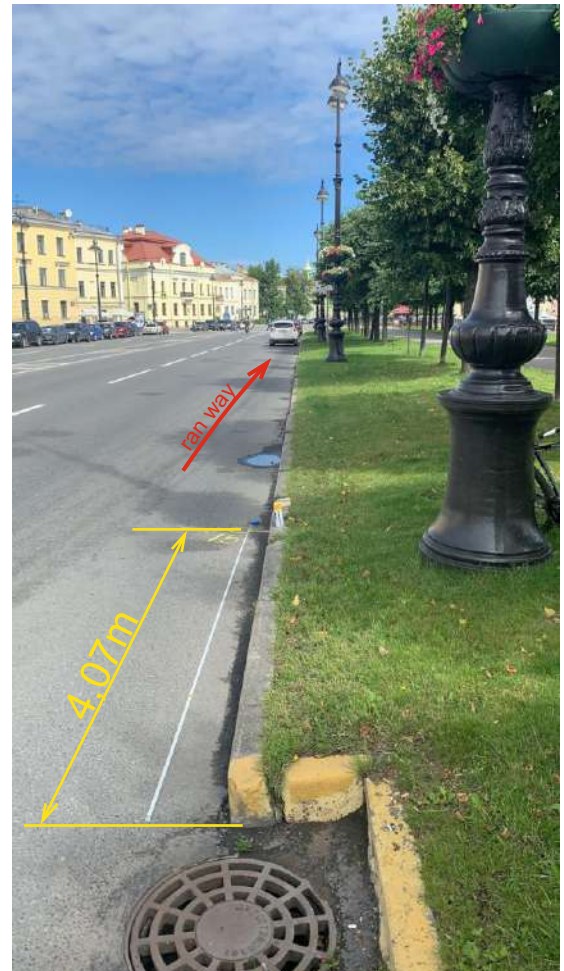
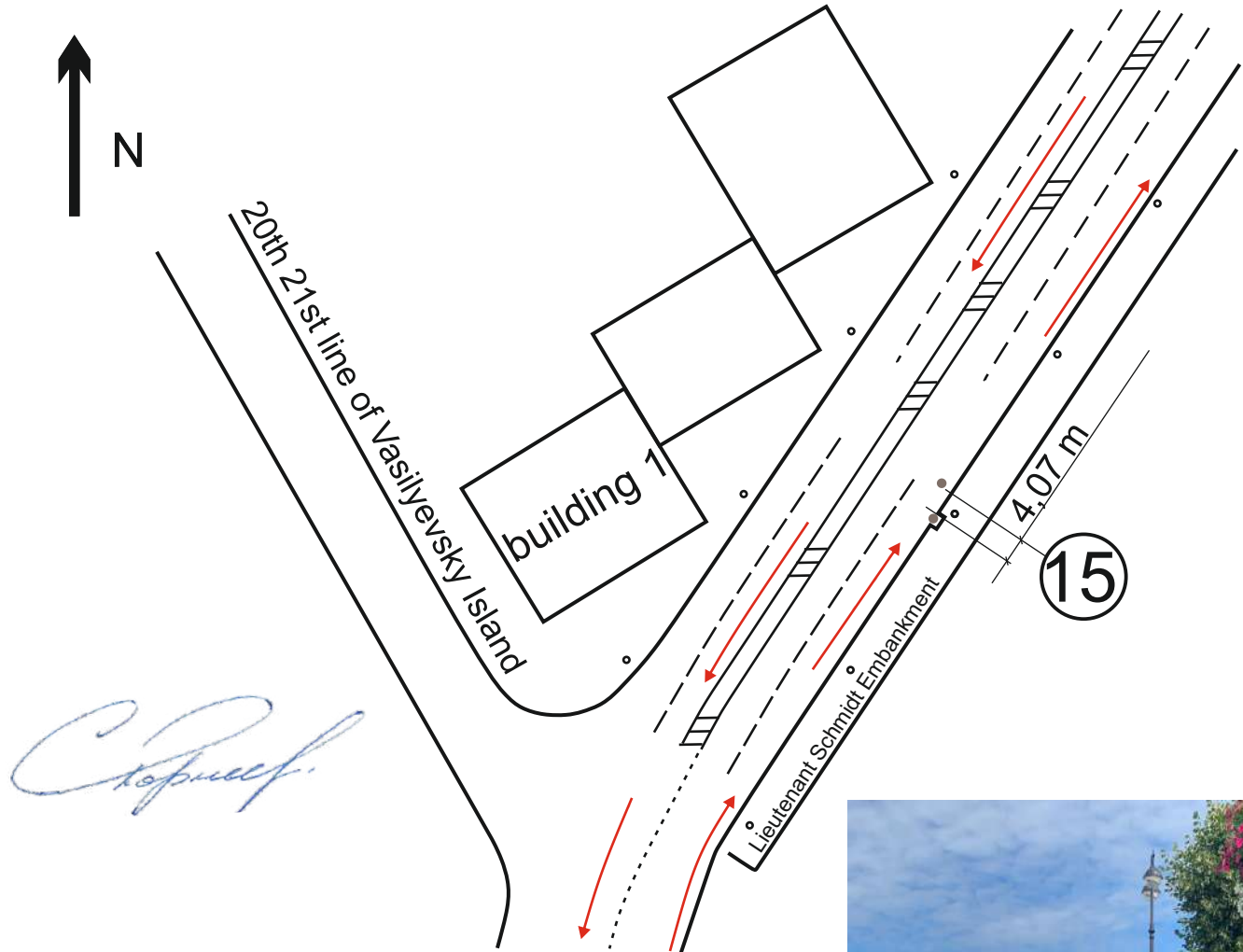


SPB half marathon the "Northern Capital"

09.08.2020

⑮ - 15 km split

Lieutenant Schmidt Embankment House 1. 4,07 m after hatch



SPB half marathon the "Northern Capital"

09.08.2020

②0 - 20 km split

Connogvardeisky Boulevard building 1. 0,31 m after hatch

